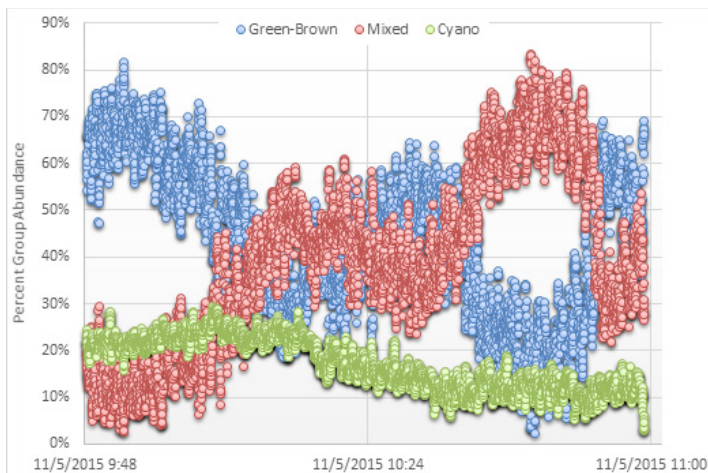


PhytoFind™

in situ Algal Classification

Algal Classification & Total Chlorophyll

PhytoFind is an *in situ* Algal Classification tool that distinguishes among algal groups. Real-time abundance estimates are calculated for PE-containing algae (mixed group), PC-containing algae (Cyanobacterial groups), and total algae (green/brown groups). Estimates are reported as chlorophyll $\mu\text{g/L}$ concentrations as well as percent contribution per group relative to the whole phytoplankton population sampled. Automatic correction for dissolved organic materials (DOM) provides increased accuracy for real-time estimates when in DOM rich environments. The optical filters used in PhytoFind's sensors greatly reduce interference from suspended sediments.



PhytoFind is field-ready; no calibration is required. Solid-state optoelectronics ensure long term instrument stability and reliability. Factory-installed temperature and depth sensors are included in the standard PhytoFind package. The durable delrin housing is resistant to harsh environments. An antifouling copper plate and mechanical copper wiper can be factory installed to minimize biofouling for long term deployments. With a large internal memory and multiple accessories such as a high capacity external battery, the PhytoFind is an ideal instrument for many applications.

WHO WE ARE

Since 1972 Turner Designs has provided over 75,000 sensitive, reliable and easy-to-use fluorometers for environmental and industrial uses. We specialize in sensitive detection of materials with fluorescence properties. With distributors around the world, we provide free technical support for the life of our instruments.

CONTACT US

Web: www.turnerdesigns.com
Email: sales@turnerdesigns.com
Toll-Free: +1.877.316.8049
Phone: +1.408.749.0994

OPTICAL SPECIFICATIONS

MDL: 0.5 $\mu\text{g/L}$ chlorophyll
Max Range: 0-250 $\mu\text{g/L}$ chlorophyll
Sensor Light Source: Light Emitting Diode (LED)
Detector: Photodiode

ELECTRICAL SPECIFICATIONS

Minimum Sample Interval: 1 second
Internal Data Storage Capacity:
- Over 60,000 Data Points
Download File Format: *.csv
Interface: RS232
Data Output: Digital (ASCII)
DC Power Required: 8 - 30 volts; 2.2 ampere
Maximum Current Draw @ 12 volts:
- Operational Mode: 300 mA
- Sleep Mode: 3 mA

PHYSICAL SPECIFICATIONS

Weight in Air: 2.87 kg; 6.33 lbs
Length: 27.43 cm; 10.8 in
Diameter: 13.84 cm; 5.25 in
Material: Delrin Plastic
Operating Temperature: -2 to 50° C
Depth: 0 to 600 meters