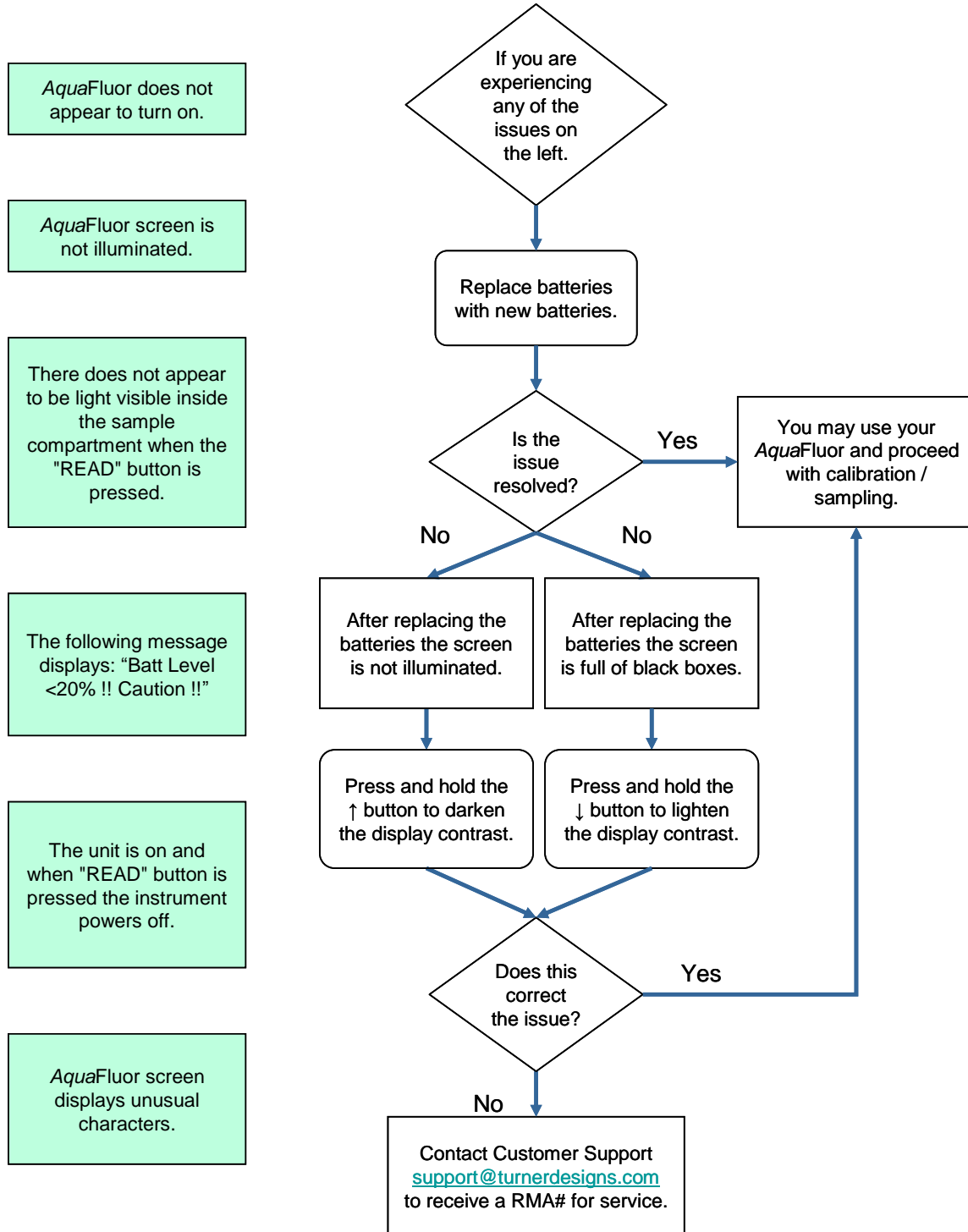


The AquaFluor™ is, generally, a trouble-free solid-state instrument. However, there have been a few issues reported that can easily be diagnosed and/or resolved in the field. Please use this guide to address some common Power / Battery / Screen Issues:



Please use this guide to address some common reading and calibration issues.

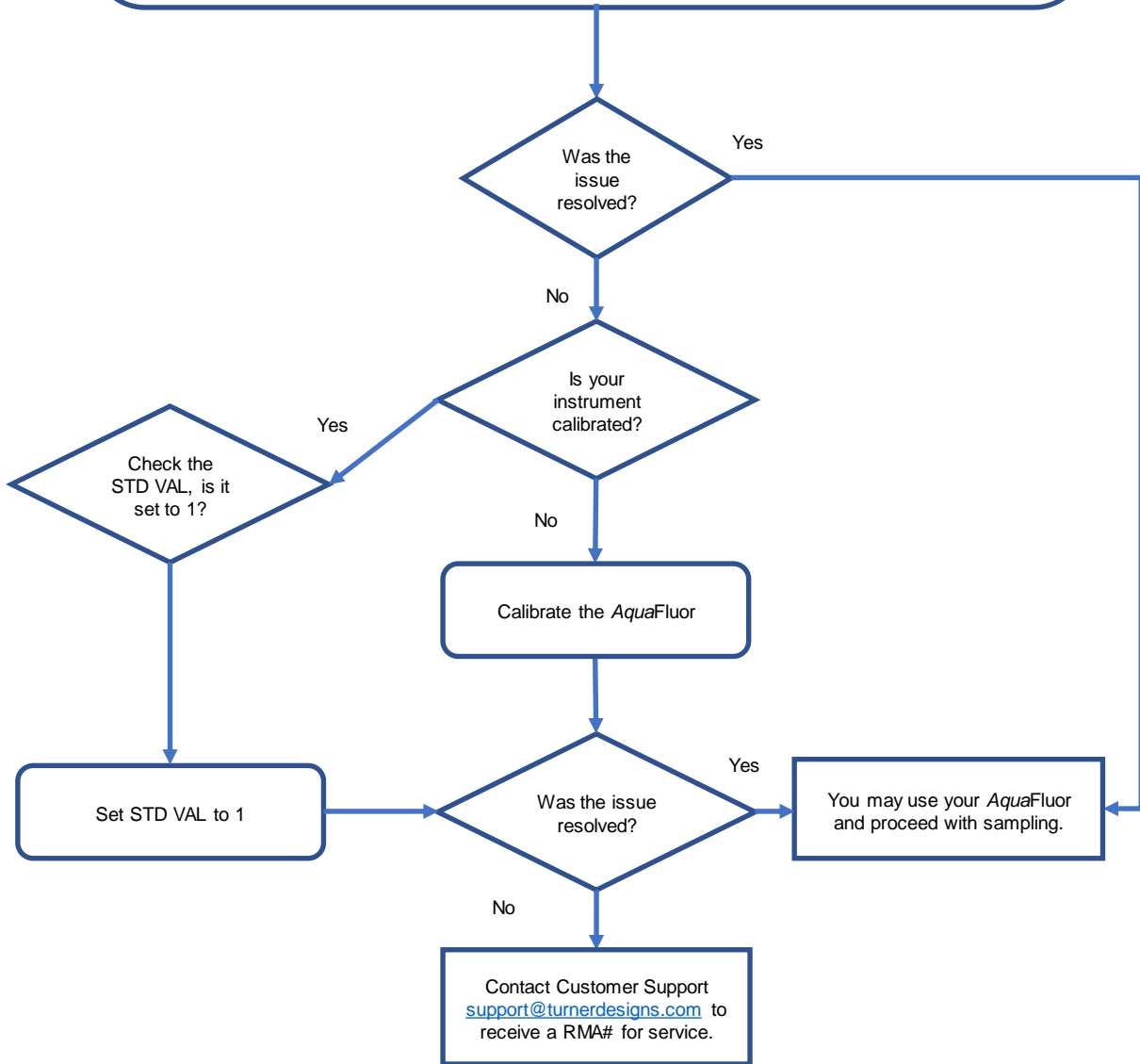
Readings for the sample are 0

Readings for the sample and/or blank are highly variable

When reading the blank, there is negative result <-2 or positive result >2 and never 0

If you are experiencing any of the issues above, try the following

- Check the sample well and make sure that it is dry. Dry sample well if necessary using a non-abrasive wipe or lint-free cloth.
- Wipe down the cuvettes with a lint-free cloth and make sure they do not have moisture on the outside.
- Check the cuvette for scratches. Replace cuvette if scratched.
- Make sure that your cuvette is at least 2/3 full with solution.
- Tap the bottom of the cuvette to purge air bubbles from solution that may cause interference.
- Mark the cuvette near the top to make sure cuvette position doesn't change.



Please use this guide to address some common Connection Issues:

