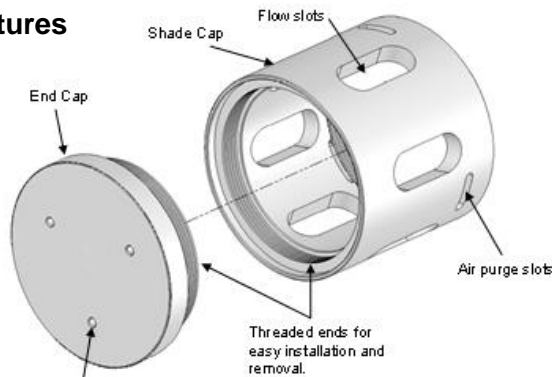


Introduction

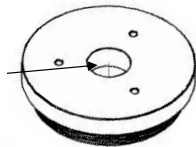
We recommend use of the shade cap for sampling as it provides a fixed distance for sample measurement and minimizes effects from ambient light. Shade Cap P/N 2300-500 is used for the C3 and 2360-500 for the C6P Submersible Fluorometer and PhytoFind; P/N 2300-502 is available for the C3 C-Ray Towed Deployment Body and offers protection for the components located on the optical head. Shade caps prevent damage from deploying, recovering, or transporting the instrument, in fast-flowing environments, and/or from bottoming out in shallow environments.

An optional stainless steel weight P/N: 2300/2360-510 may be purchased and installed to help weigh the unit down for deploying to desired depths and maintain its vertical position during vertical profiling and/or mooring applications.

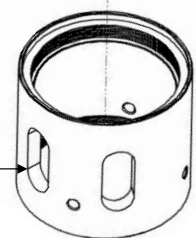
Features



P/N 2300-502
Has a hole to allow increased flow in towed applications

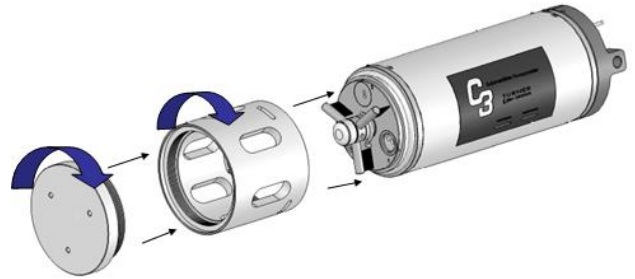


P/N 2300-502
Has flow slots on one side of the cap to ensure the sensors are properly shade during towing.



Installation

1. Turning clockwise, hand tighten the air purge slot end of the Shade Cap onto the Submersible Fluorometer's optical head until the Shade Cap is fully secured to the unit.



2. Turning clockwise, hand tighten the End Cap to the other end of the Shade Cap until it is fully secured to the Shade Cap (Optional).

Completed Shade Cap Installation



Specifications

Specification	C3	C6P and PhytoFind
Material	Delrin	Delrin
Weight	389 g (0.8576 lbs.)	839 g (1.85 lbs.)
Length	10.1 cm (3.98 in.)	12.7 cm (5.00 in.)
Diameter	10 cm (3.94 in.)	13.3 cm (5.24 in.)
Depth Rating	600 meters	600 meters