

Note: Make sure Firmware 2.1 has been uploaded to your instrument and C-Soft Software Version 2.02 has been uninstalled from your computer prior to installing C-Soft Software Version 2.1.

Tools Required:

- PC with either USB or Serial COM ports
- C-Soft software install folder version 2.1
- Power Supply
- Interface Cable
- Instrument

Important Note: Do not supply power to the unit until all electrical connections are completed.

1. Download & save the C-Soft Software Version 2.1 zipped folder located on the Turner Designs support page <http://www.turnerdesigns.com/t2/sw/main.html>
2. Extract the contents of this folder to your desktop
3. Double click the **Setup.exe** icon located in the C-Soft Software Version 2.1 folder (Figure 1)
4. Click the **Next** button to automatically install files into the default folder location (C:/Program Files) or select the **Browse** button(s) to install files to a desired folder location and then click the **Next** button (Figure 2)

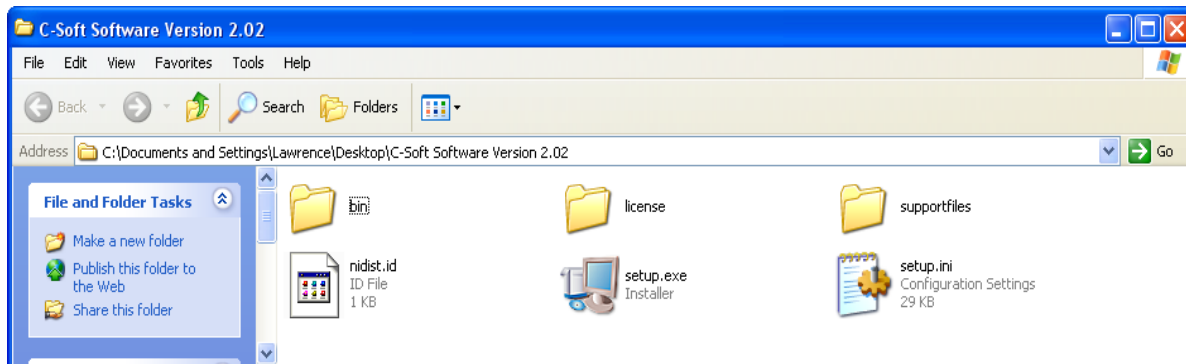


Figure 1

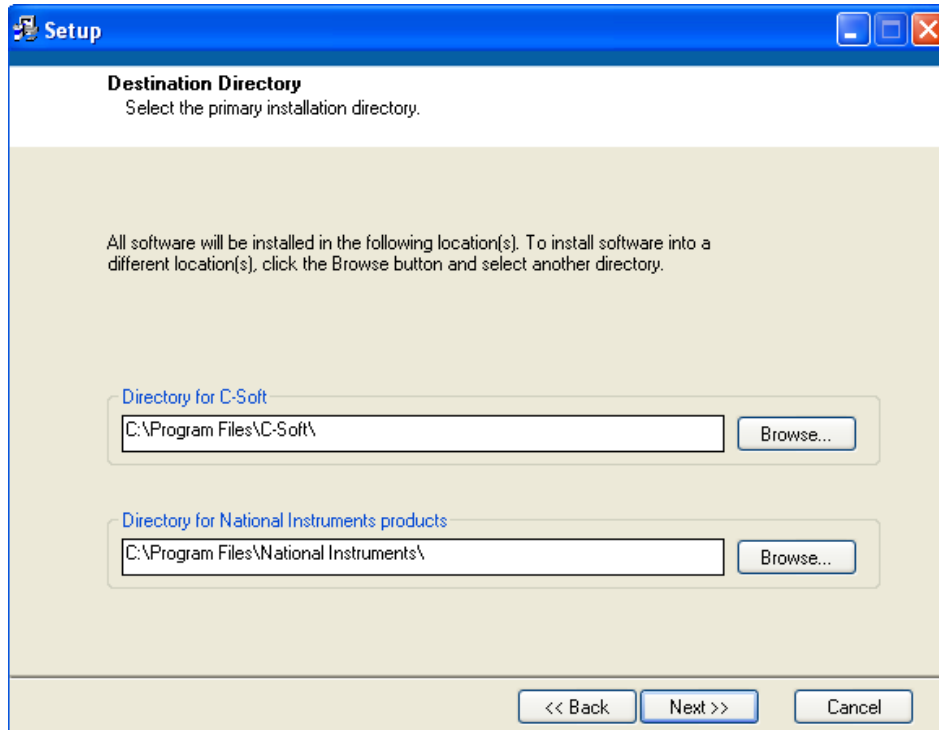


Figure 2

5. Installation may take several minutes. Existing files will be updating during installation
6. Once Installation has completed, a shortcut will be added to your desktop:



7. You may start using C-Soft Software Version 2.1 for instrument operation

Note: If you haven't upgraded your Firmware to 2.1 make sure you do so before using C-Soft Software Version 2.1

*If you are having difficulty uploading firmware to the instrument please contact our technical specialist at 877-316-8049 or support@turnerdesigns.com