

Tools Required:

- PC with either USB or Serial COM ports
- TI Downloader Program
- C-Soft firmware HEX file version 2.2
- Power Supply
- Interface Cable
- Instrument

Important Note: Do not supply power to the unit until all electrical connections are completed.

1. Download and save the TI Downloader program zipped folder to your desktop
www.turnerdesigns.com/software/sbac018c.zip
2. Extract the contents of this folder to your desktop.
3. Click the setup button located in this folder to install the TI Downloader program. **Note: Installation may take 3-5 minutes.**
4. Download and save the C-Soft Hex file version 2.2 zipped folder to your desktop,
<http://www.turnerdesigns.com/t2/sw/main.html>
5. Extract the contents of this folder to your desktop.
6. Connect the instrument's interface cable (RS-232) serial end to the PC serial connection port. (A Serial to USB cable is required for USB COM connections.)
7. Connect instrument's interface cable to the instrument's 8-pin connector.
8. Connect instrument's interface cable power to a power source to supply power to the instrument.

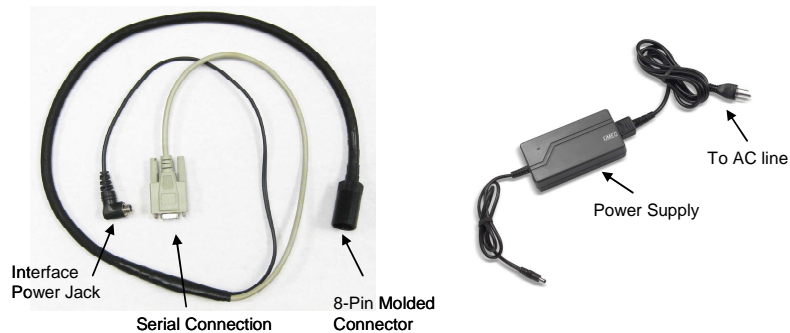


Figure 1

9. Double click “TI downloader” icon to open TI downloader program.
10. The “Open file” window will automatically be displayed (Figure 2).

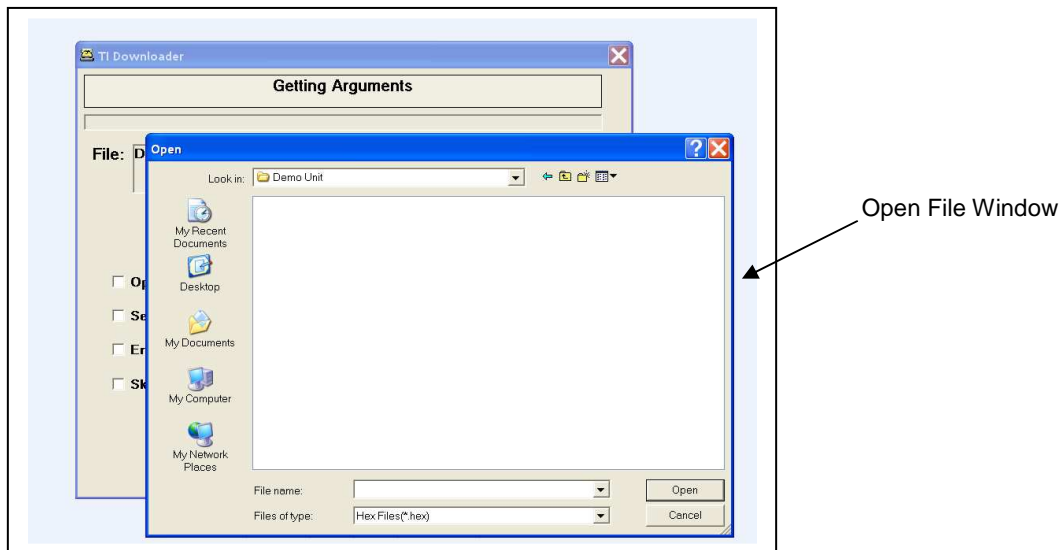


Figure 2

www.turnerdesigns.com

11. Find the folder which contains the C-Soft Hex file version 2.2, then double click to choose the “**HEX file**”.
12. If a wrong file is chosen or a change needs to be made after choosing a file, click the “**Change File**” button located on the TI Downloader window (Fig. 3) to change the HEX file.



C-Soft Hex
2.2.hex

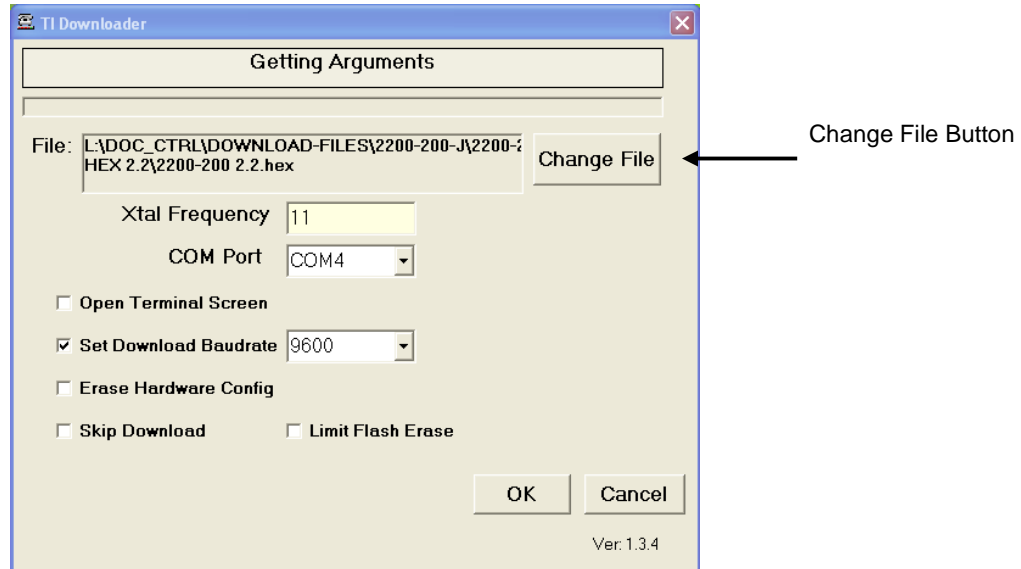


Figure 3

13. “**Xtal Frequency**” should be set at 11.
14. Select the “**COM port**” being used to connect to the instrument.
15. Click the “**Set Download Baudrate**” box and select a baud rate of **9600** from the pulldown menu.
16. Click “**OK**” to upload firmware (**upload may take 3-5 minutes**).
17. A scrolling bar will indicate upload progress. When upload is complete users may proceed with Software installation and/or instrument operation.

*If you are having difficulty uploading firmware to your instrument please contact our technical specialist at 877-316-8049 or support@turnerdesigns.com.