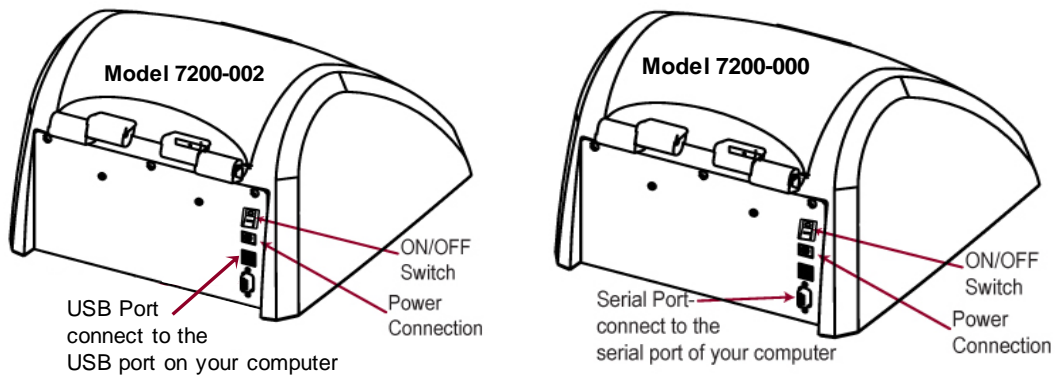


1. Connecting the Trilogy to a PC via USB cable
The Trilogy Laboratory Fluorometer Model 7200-002 can be connected to a PC for streaming data directly into Excel spreadsheets. To connect via USB you will need:

- Microsoft Windows PC
- Microsoft Excel
- Trilogy Fluorometer P/N 7200-002
- Trilogy power supply
- Trilogy Software
- Trilogy USB Drivers
- Standard USB printer cable

Note: For users with Model 7200-000 USB Data Cable P/N 021-7202 will not work. You must use RS-232 Cable P/N 021-0700.

For Model 7200-000 connect RS-232 Cable P/N 021-0700 between the Trilogy and the PC and skip to Step 3.



2. Follow these simple instructions to install the USB driver for connecting the Trilogy to your PC:
 1. Download the necessary driver folder from the flash-drive or <http://www.turnerdesigns.com/customer-care/software-and-firmware/trilogy-laboratory-fluorometer>
 2. The downloaded folder will be titled 'Trilogy USB Driver' and may be a *.zip folder
Note: For *.zip folders, right-click on the folder and select extract to extract the contents.
 3. The folder will contain a file titled 'runme'
 4. Double-click on 'runme' to start driver installation on the PC
 5. Click 'Yes' to allow the installer to continue
 6. Click 'Next' on the installation wizard's window
 7. Click 'Install' to trust the source of the installation
 8. Wait while the drivers are installed - this may take several minutes.
 9. Once the drivers are installed, click 'Finish'

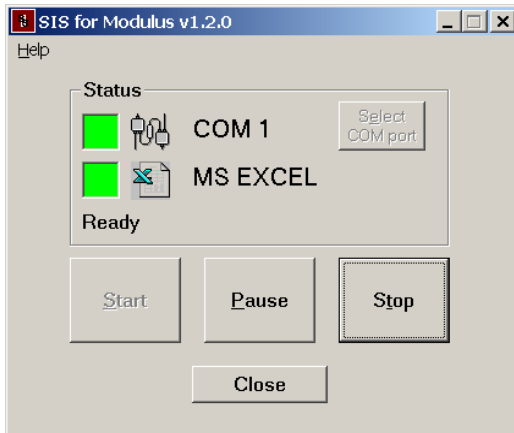
3. Trilogy Software Installation

1. Download the Software folder from the flash-drive or <http://www.turnerdesigns.com/customer-care/software-and-firmware/trilogy-laboratory-fluorometer>
2. Click the 'setup.exe file' link.
3. Open the downloaded folder and double-click the 'setup' file.
4. Click 'Yes' to allow the installation to continue.
5. Click 'Next' on the installation wizard's window, then click 'Next'.
 - a. Optional: Set a user name and organization and select who to install the application for.
6. If you want to skip step 5a, click 'Next' to change the destination folder indicating where the software will be installed.
7. Click 'Next', then 'Install' to install Trilogy Software.
8. Click 'Finish' when install has completed.
9. A Trilogy Software icon will be added to your desktop.

4. Connecting the Trilogy to your PC via USB

1. Connect the USB cable to your Trilogy.
Note: USB port is on the Trilogy's back panel.
2. Connect the other end of your USB cable to an available USB port on your PC.
3. Connect the power supply to the Trilogy.
Note: Power port is on the Trilogy's back panel.
4. Plug the power supply into an AC power source.
5. Use the ON/OFF switch to power up the Trilogy.
Note: The lower right-hand corner of the PC's display will indicate a new hardware device (Trilogy) was detected and drivers are being located; this may take several minutes.
6. Once drivers have been located and installed for the Trilogy, a message will be displayed in the lower right-hand corner of the PC's display indicating what COM port that was assigned.
Note: You will need to know what COM port was assigned for the USB connection; if you missed the notification, you can go to your PC's device manager and open 'Ports' to find the COM port setting.
7. Locate the Trilogy Software icon on your desktop and double-click it to open the software.
8. In the top right-hand corner of the window, click the select COM port button and set the COM port to the COM port assigned for your USB connection.
Note: COM port set must be from 1 to 16.
9. Click 'OK', then click 'Start'.

10. Both 'MS EXCEL' and 'COM' should show green indicator lights and an Excel spreadsheet should automatically open.
 - a. If you don't get green indicator lights for either 'MS EXCEL' or 'COM', you must restart your PC and repeat steps 7 – 10 of this procedure



Spreadsheet Interface Software status window example showing communications are set up on COM 1 and that the data will be displayed in an EXCEL spreadsheet

11. Now all your measurements will be streamed and dumped into the Excel spreadsheet.
Note: make sure to continually save the spreadsheet as there is no backup if data are deleted.
12. When finished, close the spreadsheet and the Trilogy Software.